

TABLE OF CONTENTS

Title	Page
GENERAL INFORMATION	2
SAFETY	4
CONTROLS AND GUAGES	5
OPERATION	13
SERVICE AND MAINTENANCE	18
SPECIFICATIONS	41
INDEX	46

The description and specifications contained in the operator's manual were in affect at the time the manual was approved for printing. Westward Industries Ltd. has the right to discontinue models at any time, or change specifications or design, without notice and without incurring obligation.

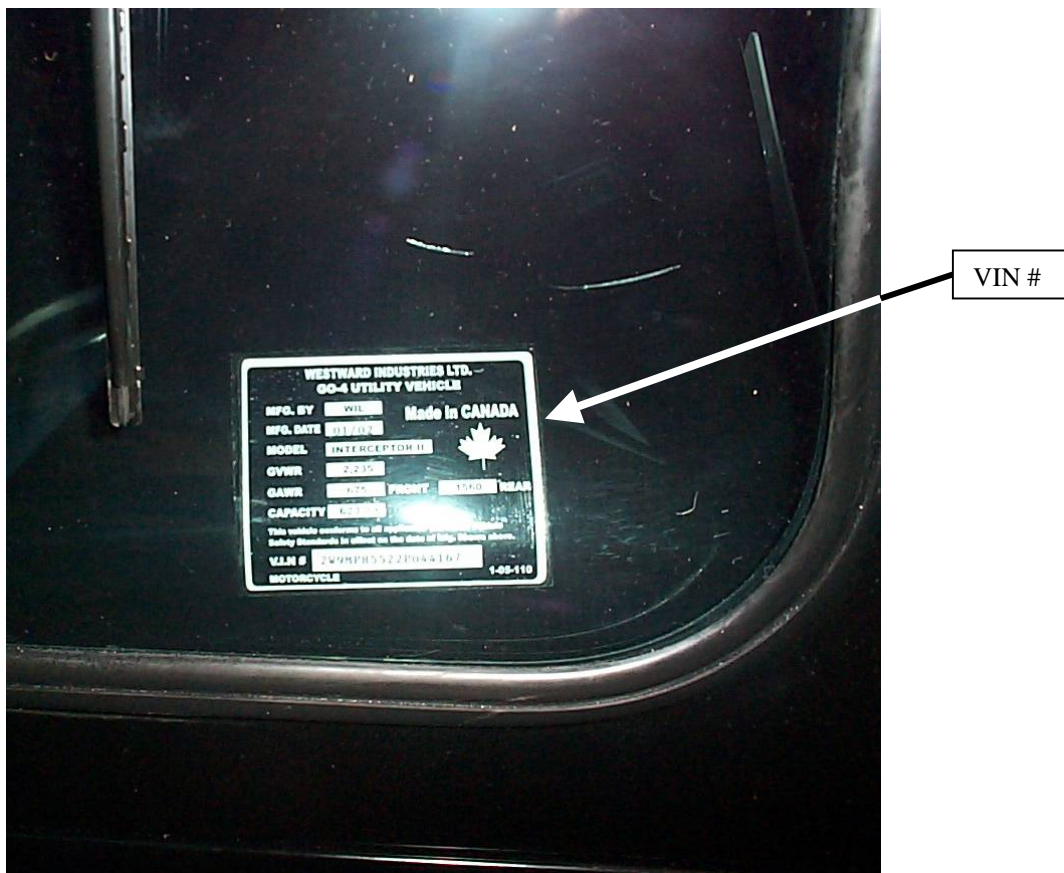
GENERAL INFORMATION

The Westward Industries GO-4 is powered by a 1000cc 4-cylinder water cooled engine. The engine power is transferred to the drive wheels by a four speed automatic transmission.

Vehicle Identification Number

The decal is located on the front left hand side of dash.

V.I.N.#



General Information – cont'd

Engine Number

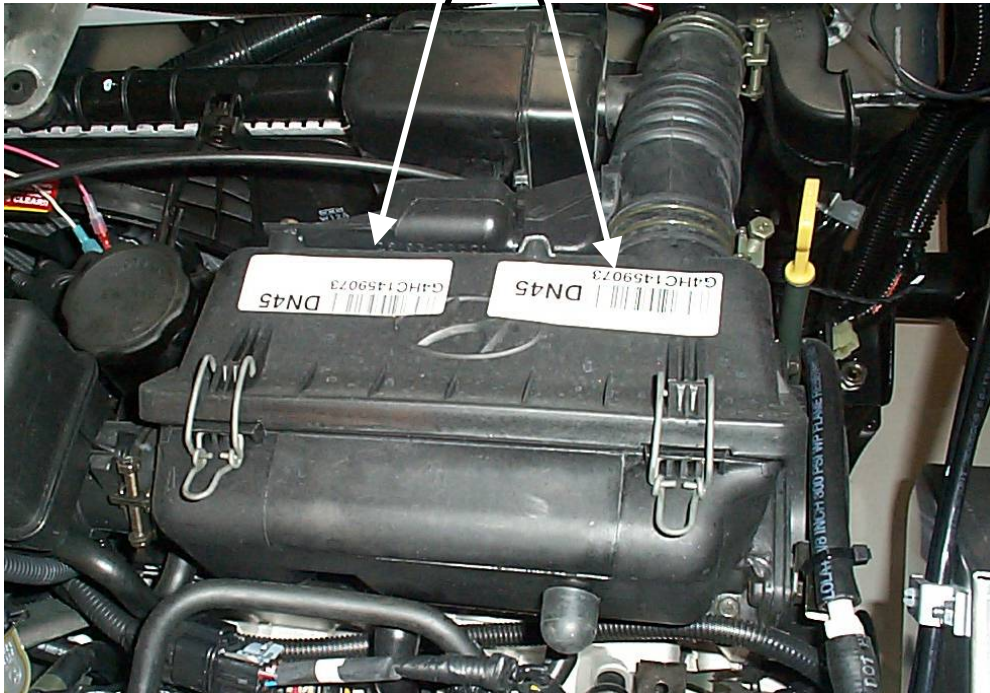
It is stamped just below the cylinder head on the transmission end of the engine block. There is a temporary engine tag on the engine when it is delivered (this is paper sticker so it is advised that you record the number below as a permanent record).

Engine No. _____

Vehicle Emission Control Information Decal

It is located on engine electrical rail.

Engine Number
Stickers



SAFETY

The Safety Alert Symbol means
ATTENTION! BECOME ALERT!
YOUR SAFETY IS INVOLVED!

CAUTIONS and WARNINGS

Throughout the operator's manual, you will find Cautions and Warnings.

Warnings remind you to be especially careful to avoid personal injury.

Cautions are provided to prevent you from making an error, which could damage the vehicle and possibly cause personal injury.

Safety Reminders

1. Make sure the GO-4 operator has read the manual and understands it
2. Do not let children operate vehicle.
3. This vehicle is to carry one person **ONLY**. No riders!
4. Use a seat belt for optimum safety.
5. Keep both hands on steering wheel whenever possible.
6. Keep legs and arms in the vehicle when it is in motion.
7. Always shut off engine when vehicle is being refueled.
8. Never smoke when refueling or servicing vehicle.
9. Always dim headlights when approaching people or other vehicles.
10. Never make sudden turns or stops when not necessary.
11. **NOTE:** The cornering ability of three-wheeled vehicles is not as great as that of similar 4-wheeled units. A warning buzzer will sound if the vehicle is operating on too much of a slope or if a corner is taken at too high a rate of speed.
12. Always keep within load limits and never overload it.
13. Always run the vehicle in open areas with plenty of fresh air to prevent carbon monoxide poisoning.
14. Always slow down before you turn and when travelling over rough areas.
15. Always signal lane changes and turns.
16. Always wear a helmet where law states such as required.

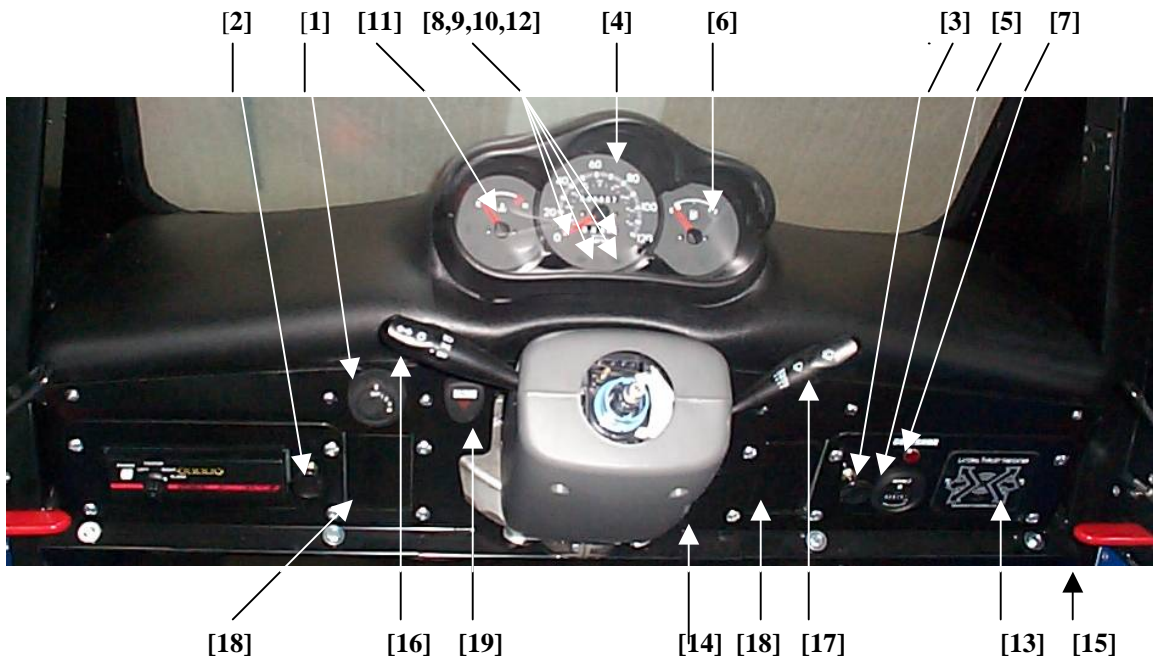
NOTE: The GO-4 is classed as a motorcycle.

Operating Precautions for the Catalytic Converter

1. Use only unleaded fuel in your vehicle.
2. Do not park the vehicle near or over flammable objects such as dry grass.
3. Do not operate engine at high idle speeds for long periods of time while in "P" or "N"
4. Do not allow your vehicle to run empty of fuel.
5. Do not operate the vehicle when there are signs of engine malfunctions, such as misfire or noticeable loss of power to the engine.
6. Do not coast with engine off.
7. Do not go down steep grades in gear with ignition off.
8. Do not modify or tamper with emission control system. Let a qualified technician do the adjustments.

CONTROLS AND GUAGES

- | | |
|--|---|
| <ol style="list-style-type: none"> 1. Fan Speed 2. Temperature Control 3. Air Delivery Control 4. Speedometer 5. Hourmeter 6. Fuel Gauge 7. Governor Light 8. Park Brake/ Brake Warning Light 9. High Beam Indicator Light 10. Turn Signal Lights (L, R) | <ol style="list-style-type: none"> 11. Coolant Temperature Guage 12. Oil Pressure Light 13. LTI (Lateral Thrust Indicator) 14. Ignition Switch 15. Auxiliary Switches (two) 16. Signal/Light Control Stalk 17. Wiper Control 18. Vents 19. Hazard Switch |
|--|---|



Controls and Gauges – cont'd

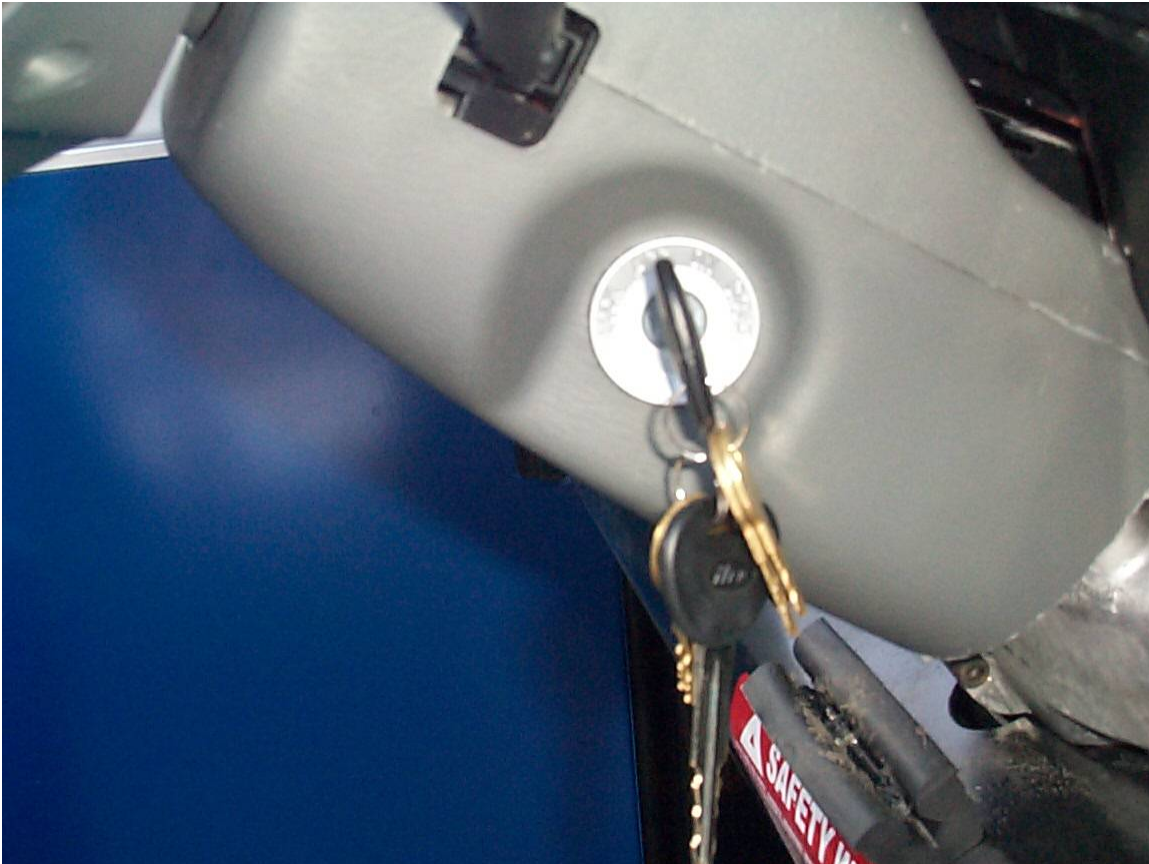
All controls and gauges are located on the dash.

Ignition Switch (4 position)

- a. Accessory Position: Allows use of various instruments and accessories without the engine running. ie wipers.
- b. Off Position: Prevents all electrical powered accessories and engine from running except hazard warning flasher and allows key to be removed
- c. On Position: This allows all accessories and engine to be run.
The key is automatically returned to this position after starting the GO-4
- d. Start Position: Hold key in start to engage starter, upon engine starting release key.

Important: Do not turn key to “start” position with engine running.
Severe damage can result to to starter drive and flywheel teeth.

Note: If GO-4 does not start within 15 seconds, turn key to Off position, then try again in 30 seconds.
Damage may to occur to starter if it is run continuously for an extended period of time.



Controls and Gauges – cont'd

Note: The GO-4 will start only when the transmission is in Park or Neutral.

Gear Selector

The gear selector is located to the left and on the seat box. When shifting from Park or Neutral to any gear, hold foot on brake. Use the thumb button on the side of gear selector to release from “P” or “R”. When the transaxle is in Park, the push button will pop out automatically, locking the lever in the Park position. In this position the gear selector cannot be moved unless the button is pushed in.

“P” (Park) position: use only when the vehicle has come to a complete stop.

WARNING: When the above is not followed, extreme damage to

transmission can occur. “P” is not used as a brake.

“R” (Reverse) position: Use for backing up vehicle from a stop. Note: A back up alarm (if equipped) will sound when the transmission is in “R”.

“N” (Neutral) position: For standing (brakes applied).

“Overdrive” (switch on side of shift lever handle) Due to its forward speed being governed this vehicle should be operated with the overdrive turned off under normal conditions.

“D” (Drive) position: For normal driving this transmission will shift automatically through the three forward gear sequence.

“2” position: manually select when power is needed to go up steep hills, a braking assist when going down hills or for better control when starting off on slick surfaces.

“1” position: Manually select when climbing up or down very steep hills or for better control on slick surfaces.

Parking Brake

Pull up to engage. Push down to release parking brake. Brake light on dash will come on when parking brake is engaged.



Controls and Gauges – cont'd

Foot Throttle

Push pedal down to open throttle. Idle position is when pedal returns to the top.

Note: The GO-4's engine high idle comes automatically as engine reaches normal temperature the high idle device will come off.

Brake Pedal

When pedal is depressed, the vehicle's brakes are applied and vehicle will slow down to a stop.

Doors

The doors slide on tracks to ease opening and closing. The window can be opened separately from inside (eg. To provide ventilation) without affecting door operation and safety.

Door: Open door by pulling on red handle and slide door back on its tracks. Close door by pushing on black handle and allowing door to travel forward until click is heard.

Window: Pull back handle and slide window back to first notch (vent position) or back until it locks in the fully open position.



Speedometer/Odometer

The speedometer indicates the forward speed of the vehicle.

This is shown in the MPH by large number and km/h (kilometers per hour) by the small numbers. The odometer indicates the total distance (in miles) the vehicle has driven.

Hourmeter

Records the number of hours that the vehicle has run and is important if your vehicle operates at slow speeds and idles a good portion of its daily operation. It is a better indicator when maintenance items should be carried out, eg oil and filter changes.

Fuel Gauge

Records the fuel level in the tank. Tank capacity is 9.0 US gal, 34 liters.

Controls and Gauges – cont'd

Warning and Indicator Lights

Battery Warning Light: If this light is displayed when the engine is running, you may have a problem with your charging system. This display will also stay on while the key is in RUN until the engine is started.

Governor: Red indicator light comes on when vehicle exceeds the governed speed of 40 MPH (65 km/h). The engine will run on two cylinders to drop the governed speed.

Brake System Warning Light: Red warning light has two functions:

1. Park brake warning light. This indicates when the parking brake is applied when the engine is started. Release the parking brake fully before moving vehicle. The light should go off when the parking brake is released.
2. Brake fluid level warning light. This warning light is still on even when the parking brake is completely released. It may indicate low brake fluid level in the reservoir.

If the warning light stays on:

1. Make sure parking brake is full released.
2. Carefully stop your vehicle. Put in "P" Park and apply emergency brake.
3. With engine stopped, check fluid level and flow. Check all brake components for leaks.
4. If any leaks are found, if warning light continues to stay on, or the brakes do not operate properly do not drive vehicle.
5. Have your vehicle towed to an authorized dealer for a full brake examination. Let them do the necessary repairs.

WARNING: Driving your vehicle with improperly operating brakes can cause severe damage to you and your vehicle.

Check bulb operation: the warning light glows when the ignition key is in start position and should go out when the brake is released and engine is started.

Headlight High Beam Indicator Light: The blue indicator light comes on when the headlights are on and in the high beam position.

Turn Signal Indicators: Lights when a left or right turn is being made.

Controls and Gauges – cont'd

Panel Lights: Lights on instrument panel display gauges at night. They operate when the headlights are switched on.

Coolant Temperature Gauge: This gauge shows the engine coolant temperature. It also provides an indicator of how hard your vehicle is working. During a majority of the operation, the gauge will read in the normal range or less. If you are pulling a load or going up hills, it is normal for the temperature to fluctuate and approach the high range. Avoid engine overheating.

Oil Pressure Warning Light: The red oil pressure light indicates the low oil pressure in the engine.

Auxiliary Switches

The illuminated rocker switches operate the following options:

- Roof-mounted work light(s). Equipped with a 50-amp relay for heavy-duty use.
- Work lights or other customer installed options



Heater Controls



Fan Speed: The four-speed heater control switch is located on the left side of the dash. Turn clockwise to increase fan speed.

Heat/Cold: Temperature is controlled by pulling control for more heat. Push in to reduce heat. This control is located left and below the fan control switch.

Defrost/Vent: Air can be directed to defrost the front window or to heat the compartment by pulling or pushing this control. This control is located on the right side of steering column on dash front.

Air Conditioner: Activate the optional air conditioning by pushing the middle of the fan speed control button. The A/C light will illuminate when air conditioning is engaged.

Controls and Gauges – cont'd

Steering Column Controls

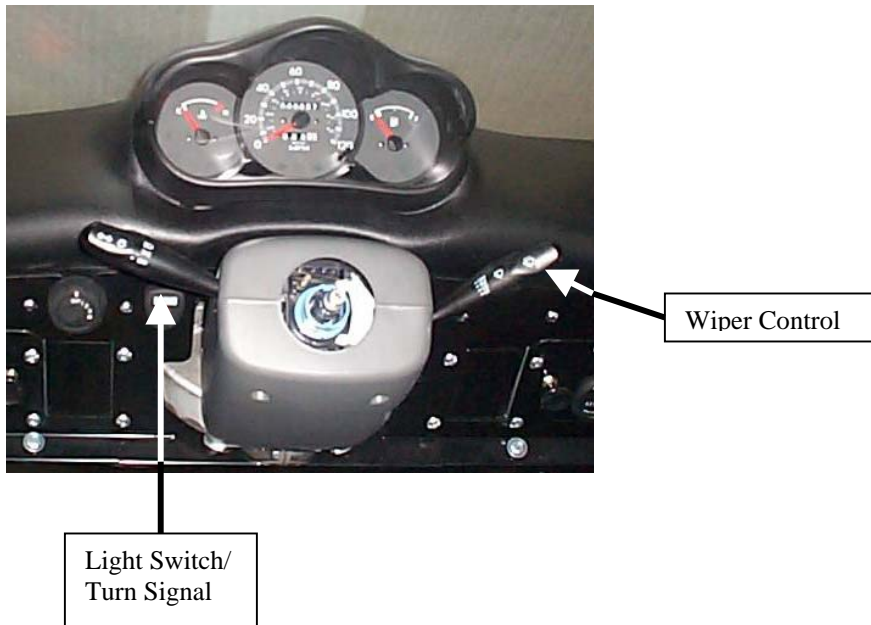
Light Switch/Turn Signal: The multifunction lever is on the left hand side of the steering wheel.

Turn Signals: Pull lever down until it latches to signal a left turn and push it up for a right turn. The indicator lights on the instrument panel will indicate a left or right turn. When the turn is complete the steering wheel will cancel the turn signal. If the turn signal continues to flash, pull the turn signal switch back to OFF position.

Dimmer Switch: To change your headlamp from low to high beam, push the lever away from you, until it latches and release. The blue high beam indicator on the dash glows when the headlamps are on high beam. To change your headlamp from high to low beam, pull the lever toward you and release.

Flash to Pass: Pull the lever toward you and hold to momentarily turn on the high beam.

Lights: Rotate the knob on the end of lever to the first position. This activated the clearance, parking, license, and taillights. Turn knob to second position to activate headlights, license, and taillights.



Tilt Adjustment: Remove steering column cover by removing two Philips head screws on bottom of column cover and unsnapping top and bottom portions of the cover. Loosen the two bolts with brass colored washers on each side of the column and adjust the wheel to the desired height. Tighten bolts. Refit steering column cover.

Wiper Control

Located on the right hand side of the steering column. Move stalk down to select wiper speed. When the wiper is on the INT (intermittent) setting, rotate knob on end of stalk to select desired intermittent setting.

Dome Light

Located on the ceiling in compartment. Push switch on dome light to illuminate it. Push again to shut it off.

Controls and Gauges – cont'd

Seat

Adjust seat-moving lever to the right. Push or pull on seat until desired position obtained. Release lever. The seat back can also be adjusted by lifting the lever on the right hand side of the seat close to the back. Do not put pressure on the seat back while attempting to lift lever as this could bind the system.

Seat Belt

The lap/shoulder belt should be used at all times when the vehicle is in motion.

To fasten seat belt:

1. Grasp the buckle end and tongue plate.
2. Slowly pull out the tongue plate section.
3. Insert the tongue plate into the open end of the buckle.

A noticeable click will indicate the seat belt is securely locked.

Unfasten seat belt:

4. Push button on buckle end to release.
5. The tongue end will automatically return to resting position along side seat.

Note: To help decrease the possibility or severity of injury in sudden stops and accidents, buckle up at all times when using your vehicle. Position the belt, low on the hips and make sure it always is snug. Use the seat belt at all times when the vehicle is in operations.



OPERATION

WARNING: Do not exceed payload capacity given on vehicle nameplate or permit passengers any place on the vehicle.

- **A three-wheeled vehicle is not as stable as a four-wheeled vehicle while cornering, particularly while on a down hill grade. Pay attention to the LTI warning which will sound if maximum lateral “G” force is exceeded.**
- **Place heavy loads forward of rear axles. Unbalanced or top heavy loads can cause vehicle upset.**
- **Wear a helmet.**
- **Do not start your vehicle in a closed garage or other enclosed areas. Exhaust fumes can be toxic. Always open the garage door before you start the engine.**

Before you start your vehicle, do the following:

1. Make sure you buckle your safety belt. See Seat Belt in the Controls and Gauges section of the manual for more details.
2. Make sure the gearshift selector is in Park and the parking brake is set before you turn the key.

Starting the Vehicle: Further information on engine starting is provided in this section.

1. Adjust the seat for easy access to switches and controls.
2. Adjust mirrors for a clear rear view both right and left mirrors.
3. Fasten seat belt.
4. Put key in ignition.
5. Turn key to start vehicle.
6. Use accelerator after vehicle has started.
7. Step on brake pedal.
8. Place gear selector into desired gear.
9. Release parking brake.

Note: Vehicle will not start if the transmission is not in “P” or “N”.

Stopping and Leaving Vehicle:

1. Stop unit fully with brake pedal.
2. Place gear selector lever in “P”.
3. Apply parking brake.
4. Turn ignition switch to OFF position and remove key.

Note: When leaving the vehicle on an uphill or downhill, the vehicle should be “curbed” (front wheel positioned and pointed towards the curb so that the downhill momentum of the vehicle, should it roll, will force the tire against the curb).

Operation – cont'd.

Starting the Engine

When starting the fuel-injected engine, avoid pressing down on the accelerator. Use the accelerator when you have problems getting your vehicle started. See Starting a Cold Engine for details about when to use the accelerator while you start your vehicle.

IMPORTANT: Do not park, idle or operate your vehicle in tall, dry grass or other dry ground areas. The high heat generated by engine and emissions components (eg catalytic converter) could start a ground fire.

1. Turn the key to the ON position. All the warning lights, except the Brake Warning Light, should light up. If any of them do not light up, have the bulb and circuit checked. When the engine starts, the lights should go out.
2. The key must be in the START position, which cranks the engine, to test the Brake Warning Light. If the Brake Warning Light does not light up, have the bulb and circuit checked.
3. When you release the parking brake, the Brake Warning Light should go off.

Starting A Cold Engine

During extremely cold weather, let the engine idle for about one minute after starting. By doing this, you will allow the engine oil to begin to warm and lubricate engine parts before putting load on them.

WARNING: Do not let your vehicle idle too long. If it idles for more than 10 minutes, the high temperatures in the exhaust system can cause damage especially if your vehicle idles at high speeds.

1. Turn the key to START until the engine starts. Do not use the accelerator until the engine is running. Do not hold the key in the START position for more than 15 seconds at a time or you could damage the starter.
2. Release the key as soon as the engine starts. Do not hold the key in START position after the engine starts because you could damage the starter.
3. If the engine does not start on your first try, turn the key to OFF. Wait 10 to 12 seconds so that you do not flood the engine. Then begin again.
4. If the engine does not start after two tries, press the accelerator about ¼ of the way to the floor. Then try again.
5. If the engine still does not start, push the accelerator to the floor and hold it while you turn the key. Turn the key to START and hold it for up to 15 seconds. Then if the engine does not start, turn the key to OFF and wait two minutes before you try again.

Operation – cont'd

NOTE: If you consistently start your vehicle in subzero temperatures, park your vehicle in a garage or use the engine block heater (if so equipped). Your dealer can provide information on block heater installation.

Starting a Warm Engine

1. Follow the steps under “Starting”
2. Turn the key to START until the engine starts. Do not use the accelerator until the engine is running. Do not hold the key in the START position for more than four seconds at a time so that you do not flood the engine.
3. If the engine does not start within four seconds, turn the key to the OFF position. Wait 10 or 12 seconds so that you do not flood the engine. Then begin again.
4. If the engine still does not start:
 - a. Press the accelerator all the way to floor. Hold it. Do not pump the pedal.
 - b. Turn the key to START.
 - c. Release the key when the engine starts.
 - d. Release the accelerator gradually as the engine starts.

Engine Cranks but Does Not Start

WARNING: If you smell gas, do not reset the fuel pump shut-off switch or try to start your vehicle. You could injure yourself or others. Get out of your vehicle and call a towing service or the local fire department.

If the engine cranks but does not start or does not start after a collision, the fuel pump shut-off switch may have been triggered. The fuel pump shut-off switch automatically stops the fuel flow to the engine when your vehicle has been hit or you are involved in a collision. The impact does not have to be great for the switch to be triggered. Minor parking lot bumping and severe road impacts (eg potholes) may trigger the switch even when there is no apparent body damage. In many instances, you might not even know that the switch has been triggered.

Once the fuel shut-off switch is triggered, you must reset the switch by hand before you can start your car. The fuel pump shut-off switch is located in the center and under electrical component rail in the engine compartment. Push the red button to reset.

Exhaust Fumes

Carbon monoxide is colorless and odorless. It is present in exhaust fumes. Take precautions to avoid its dangerous effects.

WARNING: Never idle the engine in closed areas. Never sit in parked or stopped vehicle for more than a short period of time. Exhaust gases, particularly carbon monoxide, may build up. These gases are harmful and could kill you.

If you smell exhaust fumes of any kind inside your vehicle, have your dealer inspect and fix your vehicle immediately. Do not drive the vehicle if you smell exhaust fumes.

Operation – cont'd

Refueling

WARNING: Use only unleaded fuel, damage to the pollution control system and catalytic converter will occur if leaded fuel is used. Do not use fuel system cleaning agents.

Shut off engine and do not smoke while refueling. A fire or explosion may occur.

Filler Cap

Always ensure that the filler cap is in place and tight while operating this vehicle.

To remove cap, turn counterclockwise.

To install cap, turn clockwise until a click(s) is heard.

Fuel Type

Use only a minimum of 87 octane rating for best performance. If your vehicle doesn't perform well switch to another fuel. If this doesn't cure the problem see your GO-4 dealer or agent service technician. If your vehicle is damaged because of wrong fuel, your warranties may not apply.



NOTE: Higher-octane fuel is allowed. If a lower octane fuel is used it can cause a persistent and heavy pinging, which can cause severe damage to engine.

Your vehicle may knock slightly when driving up steep hills or when you accelerate. See your GO-4 dealer if your vehicle:

1. Still knocks heavily under all driving conditions.
2. Vehicle knocks lightly while you are driving at cruising speed on level ground.

Running Out of Gas: If your vehicle runs out of gas, try to stop on level ground. Add at least two gallons to start again. On an uneven surface, you may need to as much as five (5) gallons. You may need to turn the ignition to START (not more than 15 seconds) for a long time before the fuel system starts to pump gas from the tank to the engine.

Engine Block Heater (optional)

This dealer installed accessory is strongly recommended if you live in a region where temperatures reach 0F (-18 C) or below consistently during the winter months. An engine block heater warms the engine coolant, which improves starting, warms up the engine faster, and allows the heater -defrost system to respond quickly.

To operate the block heater, simply plug it into a ground 110-volt outlet. It is recommended that you use a Ground Fault Circuit Interrupter on your 110-volt circuit.

Operation – cont'd

WARNING: Do not use your block heater with ungrounded electrical systems or two-pronged (cheater) adapters. You can be injured by an electrical shock from an ungrounded connection. For best results, plug the heater in at least three hours before you start your vehicle. Using the heater for longer than three hours will not damage the engine, so you can plug it in at night to start your vehicle the following morning. Use a timer to conserve energy.

Tire Pressure Decal

Shows proper tire inflation rates' depending on load for your GO-4. The decal is located inside the cargo space at rear.

The tire inflation pressure for front is 32psi and for the rear is 32 psi.



Towing

Tow the vehicle only on dollies or on decks of trucks or trailers.

IMPORTANT: Failure to follow towing procedures may cause severe damage to critical vehicle parts. Turn slowly and carefully.

SERVICE AND MAINTENANCE

Engine Service

Routine service can be done by opening the rear cargo box lid using the latch. At front of the cargo box is an access cover for checking fluid levels; coolant, engine oil and transaxle.

Better access to the engine/transaxle is done by removing the rear cargo box.

1. Open box lid by unlocking rear latch.
2. Unscrew fastener and remove bracket that holds the cargo box to frame.
3. You and another person lift cargo box slightly, and slide backward, and remove.

Re-install cargo box using opposite procedures of disassembly.

Air Cleaner Element

The air cleaner element is a dry type air cleaner. It is chemically treated, pleated paper-air-filtering element which permits air flow through the air induction system, filtering out unwanted dust, dirt, and debris.

Replace air filter every 10,000 miles (16,000 km).replace more often every 5,000 miles (8,000 km) under severe operating conditions.

Access to air filter is done by:

1. Remove engine service panel inside the trunk of the vehicle or remove trunk assembly as above.
2. Release two latches on air cleaner housing cover.
3. Lift the air cleaner housing cover and air cleaner element.
4. Remove the air cleaner element.
5. To install, reverse the removal procedure.

Engine Oil

Proper amount of oil in the engine is important for safe operation. Check every time you add fuel to your vehicle. For accurate readings make sure the vehicle is on a level surface and the oil is warm.

Check oil

1. Turn off engine after the oil is warm (2-3 minutes of running).
2. Locate the oil dipstick, on the side of engine.
3. Pull out dipstick, wipe clean and replace.
4. Pull out dipstick out once again and read it. If the oil level is below the letter "F" or reads at 0.8L, add oil until it reads at the line below "F".

Adding Oil

1. Locate the oil filler cap on top of engine. Remove it.
2. Add desired amount of oil.
3. Let it sit a couple of minutes and pull dipstick to insure proper level.
4. Replace filler cap.

Choosing the Right Viscosity Grade

You must consider the temperature in which you drive your GO-4. If you regularly drive in temperatures that are below 100 F (38 C), use a SAE 5W-30 SG oil. If you drive regularly at temperatures above 100 F (38 C), use a SAE 10W30 oil. If you regularly drive in temperatures that are below 20 F (-10 C), use SAE 5W20 oil.

Service and Maintenance – cont'd

Oil and Filter Change Intervals

The engine oil and engine oil filter in the GO-4 should be changed every 5,000 miles (8,000 km) or every 650 hours, under the Normal Maintenance Schedule.

However, if the use of the GO-4 includes:

1. Extended periods of idling or low speed driving.
2. Operating in gritty or industrial conditions.
3. Majority of operation is in stop and go city traffic, or short trips (less than 10 minutes).
4. Operation in sub-freezing temperatures.

Then engine oil and filter should be changed every 2,000 miles (3,218 km) or 200 hours, whichever occurs first.

Oil Change

1. Drain oil by removing the oil filler cap and drain plug while the engine is warm.
2. Replace the drain plug tightly after the oil has been thoroughly drained.
3. Refill the engine with new oil to the “F” level marked on the dipstick.
4. Refit the oil filler cap securely.

Oil Filter

1. Remove the engine oil filter with a suitable wrench.
2. Use a clean rag to wipe off the mounting surface on the engine.
3. Apply a small amount of new engine oil on to the rubber seal of the new oil filter.
4. Install the oil filter and hand tighten. Do not use a wrench.
5. Start the engine and inspect around the oil filter seal for leaks. Check the oil level and fill to the “F” mark if necessary.

Oil Capacity: 2.96 US qt (2.8 liters),
2.64 US qt (2.5 liters) without filter



Service and Maintenance – cont'd

Cooling System

The vehicle's cooling system protects your engine from overheating in hot temperatures and freezing in below freezing temperatures. Check the level at least once a month in the coolant recovery reservoir.

If the engine is cold, the coolant level in the coolant recovery reservoir should be between the low and full mark. If the coolant level is low, add coolant to the FULL mark.

Cooling System Capacity: 6.34 US qt (6.0 litres)

CAUTION: Your vehicle is equipped with an automatic cooling fan. It may come on at any time without warning, even if ignition is OFF and key is out. If working around the fan, disconnect the negative battery terminal to avoid injury.

Adding Coolant

DANGER: DO NOT REMOVE RADIATOR CAP WHILE THE VEHICLE IS RUNNING; THE COOLANT IS EXTREMELY HOT.

Before removing the radiator cap:

1. Turn the engine off and let it cool. Even when the engine is cool be careful when you remove the radiator cap.
2. When the engine is cool, wrap a cloth around the cap and turn it slowly to the first stop.
3. Step back while the pressure releases. A hissing sound may be heard.
4. When you are sure that all the pressure has been released, use the cloth to press down on cap, turn it and remove.
5. Stand back from the radiator opening as hot steam may blow out or hot water may splash out.

NOTE: Add engine coolant only to the coolant recovery reservoir NOT to the radiator. Add to the proper level with not more than 50/50 mixture of antifreeze and water.

This will provide coolant protection to -40 F (-40 C).

NOTE: A mixture that has less than 40% engine antifreeze can cause the engine to rust and overheat. A mixture that has more than 50% engine antifreeze can cause an engine to overheat in 80 F over weather.

IMPORTANT: Do not use an alcohol or methanol antifreeze. This will cause aluminum radiator and other aluminum parts to corrode. Use a premium grade ethyl glycol antifreeze.

NOTE: See your dealer or agent to check your cooling systems for leaks if:

1. You add coolant more than once a month.
2. You have to add more than a pint at a time.

Service and Maintenance – cont'd

Brake Fluid

Under normal circumstances, your vehicle should not use brake fluid. However, expect the level of the brake fluid to slowly fall as you put more mileage on your vehicle and as brake pads wear. Check the brake fluid at least once a year. This is done by looking at the fluid level in the plastic see-through reservoir on the master cylinder. This level should be at or near the maximum line.

IMPORTANT: If you use brake fluid that is not DOT 3, you will cause permanent damage to your brakes. Never reuse brake fluid that has been drained from the system or that has been allowed to stand in an open container for an extended period of time.

WARNING: Do not let the reservoir for the master cylinder run dry. This may cause the brakes to fail.

Adding Fluid

If the fluid is low:

1. Carefully clean and remove the cap from the reservoir.
2. Fill the reservoir to the maximum line with a DOT 3 brake fluid.

IMPORTANT: Do not fill the reservoir above the maximum line.

Transaxle

Make sure the transmission fluid level is just below the “F” mark. Do not overfill.

Checking Automatic Transaxle Fluid Level

1. Park the vehicle on level ground and set the parking brake firmly.
2. Start and run engine until it is at normal operating temperature.
3. Press brake pedal firmly and move the gear selector through all the gear positions.
4. Place the gear selector lever in PARK position.
5. Measure fluid using the oil indicator markings. Clean dipstick and reinsert fully.
6. With the engine still idling, pull the dipstick out again. If the fluid is low, add enough fluid so that the oil level indicator is reading between “F” and “L” marks. Do not overfill.

Automatic Transmission Fluid: Motorcraft Mercon Automatic Transmission Fluid or similar.

Capacity: 4.23 US qts (4.0 litres)

Service and Maintenance – cont'd

Fuel Filter

The in line fuel filter is located in the engine compartment between the fuel tank and fuel injection supply manifold. Service the fuel filter every 60,000 miles or 4,000 hours whichever comes first.

Removal

WARNING: DO NOT SMOKE OR CARRY LIT TOBACCO OR AN OPEN FLAME OF ANY TYPE WHEN WORKING ON OR NEAR ANY FUEL RELATED COMPONENT. HIGHLY FLAMMABLE MIXTURES ARE ALWAYS PRESENT AND MAY BE IGNITED, RESULTING IN PERSONAL INJURY.



Fuel Filter

1. Remove the cargo box from the vehicle.
2. Relieve fuel pressure as follows:
 - Start the engine.
 - Disconnect the pump relay electrical connector.
 - After the engine stalls, turn the ignition to the OFF position.
 - Connect the fuel pump relay electrical connector.
3. Loosen the clamp and disconnect the fuel supply line at the fuel filter inlet fitting. Plug the end to prevent spillage and contamination.
4. Loosen the clamp and disconnect the fuel return line at the fuel filter outlet opening.
5. Remove the two fuel filter bracket nuts and the fuel filter bracket bolt.
6. Remove the fuel filter from the fuel filter bracket.

Installation

1. Install fuel filter to the fuel filter bracket.
2. Connect the fuel return line to fuel filter outlet fitting.
3. Install the fuel filter bracket bolt and the two fuel filter bracket nuts. Tighten the fuel filter bracket to 71-97 lb/in.
4. Connect the supply line to the fuel filter inlet fitting and install the clamp.
5. Connect the fuel pump electrical connector.
6. Start the engine and check for leaks.

Belt Tension

Alternator Belt

Apply moderate finger pressure (approximately 22 lbs or 10 kg) midway between pulleys and check the deflection.

Deflection on alternator belt should be:

New: 86-103 lb (39-47 kg). Run engine for 10 minutes and readjust belt tension.

Used: 68-86 lb (31-39kg).

Tightening the Alternator Belt

1. Loosen the alternator mounting bolt and adjust bar bolt.
2. Move the alternator to obtain the proper belt tension.
3. Tighten the bolts and recheck the tension.

CAUTION: Do not try any adjustment while engine is running.



A/C Compressor Belt

Apply moderate finger pressure between pulleys and check the deflection.

Deflection on A/C compressor belt should be:

New: 110-132 lb (50-60kg). Run for 10 minutes and readjust A/C compressor belt tension as specified above.

Used: 95-110 lb (43-50 kg). More than 10 minutes of running time.

Tightening the A/C compressor belt:

1. Loosen the drive belt idler pulley nut.
2. Loosen the fan belt idler pulley bolt.
3. Move the A/C compressor to obtain proper tension.
4. Tighten the fan belt idler pulley bolt and drive belt idler pulley nut. Recheck tension.

Service and Maintenance – cont'd

Drive Belt Removal/Installation

A/C Compressor Belt

1. Loosen the drive belt idler pulley nut.
2. Loosen the fan belt idler pulley bolt until there is enough slack to remove the A/C compressor drive belt.
3. Remove the A/C compressor drive belt from the drive belt idler pulley, A/C clutch pulley, and the crankshaft pulley.
4. Remove the A/C compressor drive belt from the vehicle.

Install:

1. Route the A/C compressor drive around the three pulleys.
2. Note: Ensure that the A/C compressor drive belt is seated properly on all the pulleys before the tension is adjusted.
3. Adjust the A/C compressor belt to the proper tension.

Alternator Drive Belt (A/C equipped models)

1. On vehicles equipped with air conditioning, remove the A/C compressor drive belt.
2. Loosen the alternator adjustment bolt until there is enough slack to remove the alternator drive belt.
3. Loosen the alternator lower bolt.
4. Position the prybar against the area around the case bolt. Remove the alternator drive belt from the water pump pulley, crankshaft pulley, and alternator pulley.
5. Remove alternator drive belt from the vehicle.

Install the alternator drive belt as follows:

1. Route the alternator drive belt around the three pulleys.
2. Ensure the alternator drive belt is seated properly on all the pulleys before the tension is adjusted.
3. Adjust the alternator drive belt to the proper tension.
4. Tighten the alternator bolt to 14-19 lb/ft (19-25 N.m.)
5. Tighten the alternator lower bolt to 27-38 lb/ft (37-52 N.m.)
6. On vehicles equipped with air conditioning, install the A/C compressor drive belt. Refer to the procedure in this section.

Jump Starting

Before jump starting the vehicle, be aware of the following:

WARNING: Hydrogen and Oxygen gases are produced during normal battery operation. This gas mixture can explode if flames, sparks, or burning substances (cigarettes, etc.) are brought near the battery. When charging or using a battery in an enclosed area (including the vehicle engine compartment) always provide ventilation and shield your eyes. Keep children away from vehicle batteries. Batteries contain sulfuric acid. Avoid contact with skin, eyes, or clothing. In case of acid contact with skin, eyes or clothing, flush immediately with clean water for a minimum of 15 minutes. If acid is accidentally swallowed, consult a physician immediately. Give the person large quantities of milk or water, followed by milk of magnesia, a beaten egg, or vegetable oil.

WARNING: To avoid any possibility of injury, extreme care should be exercised when connecting jumper cables to a discharge battery.

When the starter motor will not crank, or does so very slowly, connect a 12-volt booster battery, following these instructions and precautions. Make the connections in the numerical order shown. Disconnect the connections in the reverse order shown.

CAUTION: Do not allow the vehicles to touch.

CAUTION: Do not disconnect the battery of the vehicle to be started. Doing so could damage the operational vehicle's electrical system while jump starting.

Note: Make connections in numerical order (disconnect in reverse order eg 4, 3, 2, 1).

1. Position the vehicles so the jumper cables will easily reach both batteries and the engine block of the vehicle to be started. Do not allow the vehicles to touch.
2. Ensure all unnecessary electrical accessories on the disabled vehicle are turned off while jump starting.
3. Turn on the blower motor of the operational vehicle to remove voltage surges.
4. Shield your eyes using safety goggles or similar eye protection.
5. Ensure jumper cables are not in the way of moving parts as you make the jumper cable connections
 - a. Connect one end of the first jumper cable to the positive (+) terminal of the discharged battery.
 - b. Connect the other end of the first cable to the positive (+) terminal of the booster battery.
 - c. Connect one end of the second jumper cable to the negative (-) terminal of the booster battery.
 - d. **WARNING:** Making the final cable connection could cause an electrical arc which, if made at or near the battery, could cause an explosion.
 - e. Connect the other end of the second cable to the engine block of the disabled vehicle. Do not connect the cable to the negative terminal.
6. Start the engine of the vehicle with the good battery and run the engine at a moderate speed.
7. Start the engine of the vehicle with the discharged battery.
8. Turn off all electrical components and reduce the engine speed to idle on both of the vehicles to prevent possible damage to the vehicle electrical system.
9. Remove the jumper cables in the exact reverse order from which they were connected. With the jumper cables removed, the vehicle accessories can be used.

If the starter motor does not crank the engine sufficiently with the booster battery attached, further diagnosis of the engine and starting is required.

Service and Maintenance – cont'd

Tires

When replacing tires, it is recommended to use tires of the same size, speed rating, load range and radial construction as originally installed on the vehicle. Use of any other vehicle may seriously effect ride, handling, speedometer/odometer calibration, vehicle ground clearance, and tire clearance to the body and chassis. The GO-4 is equipped with P155/80R 13 radial (M + S) tires.

Tire Inflation

Maintain tire inflation of 32 psi – front; and 32 psi – rear. Check tire pressure each time you fill up with fuel.

Tire Rotation

To equalize tire wear, tires may be rotated. If there is unusual wear on the tire tread do not rotate until the cause of unusual or uneven tire wear is determined and corrected.

Front and rear tires perform different jobs and can wear differently depending on the type of the vehicle and driving habits. To equalize wear and extend tire life, rotate tire every 5,000 miles (8,000 km) or 325 hours.

Changing a Tire

WARNING:

1. Use the correct front and rear jacking points on the vehicle. Never use the bumpers or any other part of vehicle for jack support.
2. Do not exceed the jack's maximum permissible load, which is 1102 lbs (500 kg). The jack provided is for emergency wheel and tire change only.
3. Never go beneath the vehicle while using the jack.
4. Do not stand or run the engine while the vehicle is jacked up.
5. Never attempt vehicle repairs in the traffic lanes of a public road or highway. Always move the vehicle completely off the road and to the shoulder before trying to change a tire. If you cannot find a firm, level place off the road, call a service truck.
6. Follow jacking instructions to reduce the possibility of personal injury.
7. When one rear wheel is lifted off the ground the transaxle in PARK position will not prevent the vehicle from moving and possibly slipping off the jack, even if those positions are properly engaged. To prevent inadvertent vehicle movement while changing a tire, always set the parking brake fully. Block up the other two wheels at front and rear.

Service and Maintenance – cont'd

Front Tire

1. Park on a level surface.
2. Block rear wheels and place transmission in PARK.
3. Place a jack as near as possible to the center of the frame cross member directly behind the front wheel.
4. Before jacking the vehicle, loosen the bolts on the front wheel and the bolts which hold the axle caps.
5. Jack the front off the ground.
6. Take the bolts out of the caliper.
7. Remove the axle caps.
8. Remove the wheel bolts.
9. Reassemble in reverse order.
10. Make sure all bolts are properly tightened.

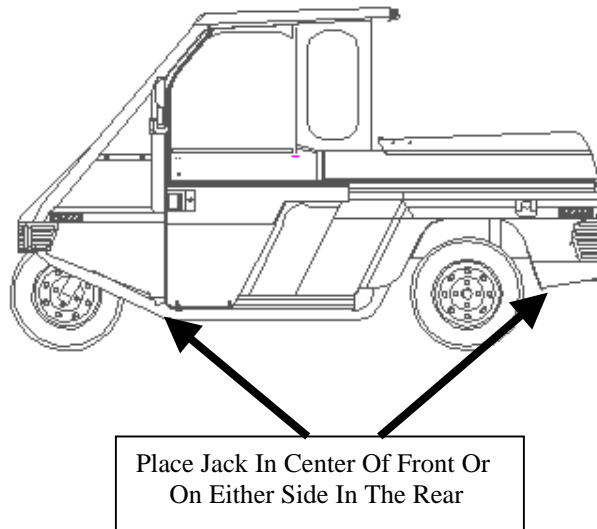
TORQUE SPECIFICATIONS:

Axle Cap Bolts: 50-55 lbs/ft.

Wheel Bolts: 70-80 lbs/ft.

Rear Tire

1. Park on a level surface and set the parking brake firmly.
2. Position the gear selector in PARK position.
3. Place the jack close to rear wheel where indicated on the frame.
4. Raise rear wheel.
5. Remove the four wheel bolts.
6. Reassemble in the reverse order of the above.
7. Tighten all wheel bolts. Torque them to 70-80 lbs/ft.



Service and Maintenance – cont'd

Fuses

All fuses are 15 amp, except for engine and computer memory, which are 10 amp.

WARNING: Replace the fuse with one of the same amps.

1. Open access door on right hand side of instrument panel by removing two screws.
2. Remove fuse by grasping each side of it and pull.
3. Replace fuse by pushing gently in the center of fuse until it stops.

Vehicle Appearance

NOTE: When using any polish or chemical cleaner always read and follow the directions, warnings and cautions on the label.

Washing and Polishing

1. To remove tree sap, insects and road tar; wash with a mild soap solution. Rinse immediately with clean clear water. The longer the time the above objects are on the vehicle, the tougher they are to remove.
2. Wash your vehicle often to prevent dirt, salt, chemicals and other material from damaging the paint and other finishes. This applies to areas where chemicals and salt are used on roads.
3. Slow down the corrosion process by applying a semi-annual coat of wax or polish.
4. Do not direct high pressure water or solution from a close distance at the front wheel bearings or at the rear wheel bearings. High pressure water at close distances can bypass the seal and contaminate the lubricant causing premature wheel bearing failure.

Important:

1. Wiping off dust or dirt with a dry cloth will scratch the finish and glass.
2. Don't wash the vehicle in direct sun or when the surface is hot.
3. When cleaning plastic surfaces use plenty of water and soft cloths to prevent scratching.
4. Prevent caustic solutions such as perfume, cosmetic oil, etc., from coming in contact with plastic covers on gauges that may cause damage or discoloration. If the above come in contact, wipe off immediately.
5. Test brakes to make sure they were not affected by the water.
6. The vehicle should be washed and dried before applying wax or polish. Don't use a polish with a large amount of abrasives as these will damage surfaces.

Service and Maintenance – cont'd

MAINTENANCE SCHEDULES

Maintenance schedules are based on how the vehicle is driven.

Regularly Scheduled Maintenance Intervals

The normal maintenance schedule should be followed if, generally, the vehicle is driven on a daily basis for more than 10 miles and **NONE OF THE CONDITIONS IN THE SEVERE MAINTENANCE SCHEDULE APPLY TO THE DRIVING HABITS.**

The Severe Maintenance Schedule should be followed if the vehicle owner's driving habits mainly include one or more of the following:

1. Short trips of less than 10 miles when outside temperatures remain below 0 F.
2. Operating when outside temperatures remain below freezing.
3. Operating during hot weather in stop-in-go "rush hour" traffic.
4. Extensive idling, such as police or door-to-door service.
5. Operating in extremely humid climates.
6. Driving in severe dust conditions.
7. Driving in areas where road salt or other corrosives are used.
8. Driving on rough and/or muddy roads.

Owner Maintenance Checks

The following list of vehicle checks and inspections should be performed at the intervals indicated.

Whenever You Stop For Fuel

1. Check the engine oil level.
2. Look for under-inflated tires.

At Least Monthly

1. Check tire pressure. Check the tires when cold, not after a long drive.
2. Check the coolant in the radiator coolant recovery reservoir.
3. Check the operation of all exterior lamps including the brake lamps, turn signals, and hazard warning flashers.

At Least Twice A Year

1. Check windshield wiper operation.
2. Check and replace worn windshield wiper blades.

Service and Maintenance – cont'd

3. Check for worn tires and loose wheel hub bolts.
4. Check pressure in spare tire (option).
5. Check headlamp alignment.
6. Check the muffler, exhaust pipe, catalytic converter, and clamps for damage.
7. Check the lap shoulder belt for wear and function.
8. Check the radiator, heater, and air conditioning hoses for leaks or damage.
9. Check the rear driveshaft joint boots for cuts or leakage.

At Least **Once A Year**

1. Lubricate all hinges, checks, latches, rollers, and all outside key locks.
2. Lubricate the door rubber weatherstrips.
3. Check air conditioning system (if so equipped) before the warm weather season.
4. Clean door guide rails.
5. Check brake fluid level.
6. Clean battery connections.
7. Lubricate the transaxle controls and linkage.
8. Inspect the refrigerant amount.
9. Inspect the A/C compressor operation.

Severe Maintenance Schedule

The Severe Maintenance Schedule should be followed if the vehicle owner's driving habits include one or more of the following:

1. Short trips of less than 10 miles (16 km).
2. Operating when outside temperatures remain below freezing.
3. Operating during hot weather in stop-in-go “rush hour” traffic.
4. Extensive idling, such as police or door-to-door service.
5. Operating in extremely humid climates.
6. Driving in severe dust conditions.
7. Driving in areas where road salt or other corrosives are used.

Service and Maintenance – cont'd

8. Driving on rough and/or muddy roads.

For items marked with a number in brackets (1), see footnotes at end of this section.

2,000 miles (133 hours)

- Change engine oil and replace oil filter (4).

4,000 miles (266 hours)

- Change engine oil and replace oil filter (4).
- Rotate tires and adjust air pressure.

5,000 miles (343 hours)

- Change front shock oil (1).

6,000 miles (400 hours)

- Change engine oil and replace oil filter (4).

8,000 miles (533 hours)

- Change engine oil and replace oil filter (4).

10,000 miles (666 hours)

- Change engine oil and replace oil filter (4).
- Inspect air cleaner element (1) (4).
- Inspect front and rear disc brake pads and rotors.
- Inspect bolts and nuts on chassis and body.
- Rotate tires and adjust air pressure.
- Change front shock oil (1).

12,000 miles (800 hours)

- Change engine oil and replace oil filter (4).

14,000 miles (933 hours)

- Change engine oil and replace oil filter (4).
- Change automatic transmission fluid (2).

15,000 miles (999 hours)

- Change front shock oil (1).

16,000 miles (1,066 hours)

- Change engine oil and replace oil filter (4).
- Rotate tires and adjust air pressure.

18,000 miles (1,200 hours)

- Change engine oil and replace oil filter (4).

20,000 miles (1,333 hours)

- Change engine oil and replace oil filter (4).
- Change front shock oil (1).

Service and Maintenance – cont'd

22,000 miles (1,466 hours)

- Change engine oil and replace oil filter.
- Rotate tires and adjust air pressure.

24,000 miles (1,600 hours)

- Change engine oil and replace oil filter,

25,000 miles (1,667 hours)

- Change front shock oil (1).

26,000 miles (1,733 hours)

- Change engine oil and replace oil filter.

28,000 miles (1,866 hours)

- Change engine oil and replace oil filter.
- Rotate tires and adjust air pressure.
- Change automatic transmission fluid (2).

30,000 miles (2,000 hours)

- Change engine oil and replace oil filter (4).
- Replace spark plugs (4).
- Inspect alternator and A/C compressor belts (4).
- Replace air cleaner element (4).
- Check idle speed (3) (4).
- Change engine coolant every 30,000 miles or 12 months (4), check all hoses and clamps
- Inspect fuel lines and hoses (1) (4).
- Inspect rear wheel driveshaft CV joints and boots.
- Inspect front and rear disc brake pads and disc rotors as well as lines and hoses.
- Change automatic transmission fluid (2).
- Change front shock oil (1).

32,000 miles (2,133 hours)

- Change oil and replace oil filter (4).

34,000 miles (2,266 hours)

- Change engine oil and replace oil filter (4).
- Rotate tires and adjust air pressure.

35,000 miles (2,343 hours)

- Change front shock oil (1).

36,000 miles (2,400 hours)

- Change engine oil and replace oil filter (4),

38,000 miles (2,533 hours)

- Change engine oil and replace oil filter (4).

40,000 miles (2,666 hours)

- Change engine oil and replace oil filter (4).
- Change front shock oil (1).

Service and Maintenance – cont'd

42,000 miles (2,800 hours)

- Change engine oil and replace oil filter (4).
- Change automatic transmission fluid (2).

44,000 miles (2,933 hours)

- Change engine oil and replace oil filter (4).

5,000 miles (2,999 hours)

- Change front shock oil (1).

46,000 miles (3,066 hours)

- Change engine oil and replace oil filter (4).
- Rotate tires and adjust air pressure.

48,000 miles (3,200 hours)

- Change engine oil and replace oil filter (4),

50,000 miles (3,333 hours)

- Change engine oil and replace oil filter (4).
- Inspect air cleaner element (1) (4).
- Inspect front and rear disc brake pads and rotors.
- Inspect bolts and nuts on chassis and body.
- Change front shock oil (1).

52,000 miles (3,466 hours)

- Change engine oil and replace oil filter (4).
- Rotate tires and adjust air pressure.

54,000 miles (3,600 hours)

- Change engine oil and replace oil filter (4),

5,000 miles (3,666 hours)

- Change front shock oil (1).

56,000 miles (3,733 hours)

- Change engine oil and replace oil filter (4).
- Change automatic transmission fluid (2).

58,000 miles (3,866 hours)

- Change engine oil and replace oil filter (4).
- Rotate tires and adjust air pressure.

60,000 miles (4,000 hours)

- Change engine oil and replace oil filter (4).
- Replace spark plugs (4).
- Inspect alternator and A/C compressor drive belts (4).
- Replace air cleaner element (4).
- Inspect ignition timing (1) (4).
- Check idle speed (3) (4).
- Change front shock oil (1).

Service and Maintenance – cont'd

- Change engine coolant every 30,000 miles (2,000 hours) or 12 months (4).
- Inspect engine cooling system, hoses, clamps, and check coolant strength every 30,000 miles (2,000 hours) (4).
- Replace fuel filter (3) (4).
- Inspect fuel lines and hoses (1) (4).
- Inspect fuel hoses and tubes for emissions (1) (4).
- Inspect exhaust heat shield.
- Inspect rear wheel driveshaft joint boots.
- Inspect front and rear brakes.
- Inspect brake lines, hoses and connections.
- Inspect front fork assembly.
- Inspect steering operation and linkage.

62,000 miles (4,133 hours)

- Change engine oil and replace oil filter (4).

64,000 miles (4,266 hours)

- Change engine oil and replace oil filter (4).
- Rotate tires and adjust air pressure.

65,000 miles (4,299 hours)

- Change front shock oil (1).

66,000 miles (4,400 hours)

- Change engine oil and replace oil filter (4),

68,000 miles (4,533 hours)

- Change engine oil and replace oil filter (4),

70,000 miles (4,666 hours)

- Change engine oil and replace oil filter (4).
- Change front shock oil (1).

72,000 miles (4,800 hours)

- Change engine oil and replace oil filter (4).

74,000 miles (4,933 hours)

- Change engine oil and replace oil filter (4),

75,000 miles (4,999 hours)

- Change front shock oil (1).

76,000 miles (5,066 hours)

- Change engine oil and replace oil filter (4).
- Rotate tires and adjust air pressure.

78,000 miles (5,200 hours)

- Change engine oil and replace oil filter (4),

80,000 miles (5,333 hours)

- Change engine oil and replace oil filter (4).

Service and Maintenance – cont'd

- Change front shock oil (1).

82,000 miles (5,466 hours)

- Change engine oil and replace oil filter (4).

84,000 miles (5,600 hours)

- Change engine oil and replace oil filter (4).

86,000 miles (5,733 hours)

- Change engine oil and replace oil filter (4).

88,000 miles (5,866 hours)

- Change engine oil and replace oil filter (4).

90,000 miles (6,000 hours)

- Change engine oil and replace oil filter (4).
- Replace spark plugs (4).
- Inspect alternator and A/C compressor drive belts (4).
- Replace air cleaner element (4).
- Inspect ignition timing (1) (4).
- Check idle speed (3) (4).
- Change engine coolant every 30,000 miles (2,000 hours) or 12 months (4).
- Inspect engine cooling system, hoses, clamps, and check coolant strength every 30,000 miles (2,000 hours) (4).
- Replace fuel filter (3) (4).
- Inspect fuel lines and hoses (1) (4).
- Inspect fuel hoses and tubes for emissions (1) (4).
- Inspect exhaust heat shield.
- Inspect rear wheel driveshaft joint boots.
- Inspect front and rear brakes.
- Inspect brake lines, hoses and connections.
- Inspect front fork assembly.
- Inspect steering operation and linkage.
- Change front shock oil (1).

92,000 miles (6,133 hours)

- Change engine oil and replace oil filter (4).

94,000 miles (6,266)

- Change engine oil and replace oil filter (4).

95,000 miles (6,333 hours)

- Change front shock oil (1).

96,000 miles (6,400 hours)

- Change engine oil and replace oil filter (4).

98,000 miles (6,533 hours)

- Change engine oil and replace oil filter (4).

100,000 miles (6,666 hours)

- Change engine oil and replace oil filter (4).

Service and Maintenance – cont'd

- Change front shock oil (1).

102,000 miles (6,800 hours)

- Change engine oil and replace oil filter (4).

104,000 miles (6,933 hours)

- Change engine oil and replace oil filter (4).

105,000 miles (6,999 hours)

- Change front shock oil (1).

106,000 miles (7,066 hours)

- Change engine oil and replace oil filter (4).
- Rotate tires and adjust air pressure

108,000 miles (7,200 hours)

- Change engine oil and replace oil filter (4).

110,000 miles (7,333 hours)

- Change engine oil and replace oil filter (4).
- Change front shock oil (1).

112,000 miles (7,466 hours)

- Change engine oil and replace oil filter (4).

114,000 miles (7,600 hours)

- Change engine oil and replace oil filter (4).

115,000 miles (7,666 hours)

- Change front shock oil (1).

116,000 miles (7,733 hours)

- Change engine oil and replace oil filter (4).

118,000 miles (7,866 hours)

- Change engine oil and replace oil filter (4).

120,000 miles (8,000 hours)

- Change engine oil and replace oil filter (4).
- Replace spark plugs (4).
- Inspect alternator and A/C compressor drive belts (4).
- Replace air cleaner element (4).
- Inspect ignition timing (1) (4).
- Check idle speed (3) (4).
- Change engine coolant every 30,000 miles (2,000 hours) or 12 months (4).
- Inspect engine cooling system, hoses, clamps, and check coolant strength every 30,000 miles (2,000 hours) (4).
- Replace fuel filter (3) (4).
- Inspect fuel lines and hoses (1) (4).
- Inspect fuel hoses and tubes for emissions (1) (4).
- Inspect exhaust heat shield.

Service and Maintenance – cont'd

- Inspect rear wheel driveshaft joint boots.
- Inspect front and rear brakes.
- Inspect brake lines, hoses and connections.
- Inspect front fork assembly.
- Inspect steering operation and linkage.
- Repack front and rear wheel bearings.
- Rotate tires and adjust air pressure.
- Replace timing chain/belt. Failure to replace timing chain/belt may result in damage to engine (3) (4).
- Change front shock oil (1).

FOOTNOTES:

1. This item is not required to be performed, however Westward Industries recommends that you perform maintenance on this item in order to achieve best vehicle operation.
2. Change automatic transmission fluid if your driving habits frequently include one or more of the following conditions:
 - Operation during hot weather (above 90 F, 32 C), carrying heavy loads or driving in hilly terrain.
 - Police or door-to-door delivery service.
3. This item is required for all states.
4. These items are for emissions control.
5. Required for all states except California.

Light Duty Maintenance Schedule

The Normal Maintenance Schedule should be followed if the vehicle is generally driven on a daily basis for more than 10 miles (16 km) and **NONE OF THE CONDITIONS SHOWN IN THE SEVERE MAINTENANCE SCHEDULE APPLY TO DRIVING HABITS.**

For items marked with a number in brackets (1), see footnotes at end of this section.

5,000 miles (325 hours)

- Change engine oil and replace oil filter (4).
- Rotate tires and adjust air pressure.
- Change front shock oil (1).
- Grease front wheel bearings (1).

10,000 miles (650 hours)

- Change engine oil and replace oil filter (4).
- Change front shock oil (1).
- Grease front wheel bearings (1).

15,000 miles (1,000 hours)

- Change engine oil and replace oil filter (4).
- Rotate tires and adjust air pressure.
- Change front shock oil (1).
- Grease front wheel bearings (1).

20,000 miles (1,325 hours)

- Change engine oil and replace oil filter (4).

Service and Maintenance – cont'd

- Change front shock oil (1).
- Grease front wheel bearings (1).

25,000 miles (1,650 hours)

- Change engine oil and replace oil filter (4).
- Rotate tires and adjust air pressure.
- Change front shock oil (1).
- Grease front wheel bearings (1).

30,000 miles (2,000 hours)

- Change engine oil and replace oil filter (4).
- Replace spark plugs (4).
- Replace air cleaner element (4).
- Inspect alternator and A/C compressor belts (4).
- Check idle speed (3) (4).
- Change engine coolant every 30,000 miles (2,000 hours) or 12 months (4).
- Inspect engine cooling system, hoses, clamps, and check coolant strength every 30,000 miles (2,000 hours) (4).
- Inspect fuel lines and hoses (1) (4).
- Inspect exhaust heat shield.
- Inspect rear wheel driveshaft joint boots.
- Inspect front and rear brakes.
- Inspect brake lines, hoses and connections.
- Inspect front steering system.
- Inspect steering operation and linkage.
- Change automatic transmission fluid (2).
- Change front shock oil (1).
- Grease front wheel bearings (1).

35,000 miles (2,325 hours)

- Change engine oil and replace oil filter (4).
- Rotate tires and adjust air pressure.
- Change front shock oil (1).
- Grease front wheel bearings (1).

40,000 miles (2,650 hours)

- Change engine oil and replace oil filter,
- Change front shock oil (1).
- Grease front wheel bearings (1).

45,000 miles (3,000 hours)

- Change engine oil and replace oil filter.
- Rotate tires and adjust air pressure.
- Change front shock oil (1).
- Grease front wheel bearings (1).

50,000 miles (3,325)

- Change engine oil and replace oil filter (4).
- Change front shock oil (1).
- Grease front wheel bearings (1).

Service and Maintenance – cont'd

55,000 miles (3,650 hours)

- Change engine oil and replace oil filter (4).
- Rotate tires and adjust air pressure.
- Change front shock oil (1).
- Grease front wheel bearings (1).

60,000 miles (4,000 hours)

- Change engine oil and replace oil filter (4).
- Replace spark plugs (4).
- Inspect alternator and A/C compressor drive belts (4).
- Replace air cleaner element (4).
- Replace timing chain/belt (2) (4).
- Inspect ignition timing (1) (4).
- Check idle speed (3) (4).
- Change engine coolant every 30,000 miles (2,000 hours) or 12 months (4).
- Inspect engine cooling system, hoses, clamps, and check coolant strength every 30,000 miles (2,000 hours) (4).
- Replace fuel filter (2) (4).
- Inspect fuel lines and hoses (2) (4).
- Inspect fuel hoses and tubes for emissions (2) (4).
- Inspect exhaust heat shield.
- Inspect rear wheel driveshaft joint boots.
- Inspect front and rear brakes.
- Inspect brake lines, hoses and connections.
- Inspect front steering assembly.
- Inspect bolts and nuts on chassis and body.
- Change front shock oil (1).
- Grease front wheel bearings (1).
- Inspect steering operation and linkage.
- Repack front and rear wheel bearings.
- Change automatic transmission fluid.
- Change front shock oil (1).
- Grease front wheel bearings (1).

65,000 miles (4,325 hours)

- Change engine oil and replace oil filter (4).
- Rotate tires and adjust air pressure.
- Change front shock oil (1).
- Grease front wheel bearings (1).

70,000 miles (4,650 hours)

- Change engine oil and replace oil filter (4).
- Change front shock oil (1).
- Grease front wheel bearings (1).

75,000 miles (5,000 hours)

- Change engine oil and replace oil filter (4).
- Rotate tires and adjust air pressure.
- Change front shock oil (1).
- Grease front wheel bearings (1).

Service and Maintenance – cont'd

80,000 miles (5,325 hours)

- Change engine oil and replace oil filter (4),
- Change front shock oil (1).
- Grease front wheel bearings (1).

85,000 miles (5,650 hours)

- Change engine oil and replace oil filter (4).
- Rotate tires and adjust air pressure.
- Change front shock oil (1).
- Grease front wheel bearings (1).

90,000 miles (6,000 hours)

- Change engine oil and replace oil filter (4).
- Replace spark plugs (4).
- Inspect alternator and A/C compressor drive belts (4).
- Replace air cleaner element (4).
- Check idle speed (3) (4).
- Change engine coolant every 30,000 miles (2,000 hours) or 12 months (4).
- Inspect engine cooling system, hoses, clamps, and check coolant strength every 30,000 miles (2,000 hours) (4).
- Inspect timing chain/belt (1) (4).
- Inspect fuel lines and hoses (1) (4).
- Inspect exhaust heat shield.
- Inspect rear wheel driveshaft joint boots.
- Inspect front and rear brakes.
- Inspect brake lines, hoses and connections.
- Inspect steering assembly.
- Inspect bolts and nuts on chassis and body.
- Inspect steering operation and linkage.
- Change automatic transmission fluid.
- Change front shock oil (1).
- Grease front wheel bearings (1).

95,000 miles (6,325 hours)

- Change engine oil and replace oil filter (4).
- Rotate tires and adjust air pressure.
- Change front shock oil (1).
- Grease front wheel bearings (1).

100,000 miles (6,600 hours)

- Change engine oil and replace oil filter (4),
- Change front shock oil (1).
- Grease front wheel bearings (1).

105,000 miles (7,000 hours)

- Change engine oil and replace oil filter (4).
- Replace timing chain/belt (4)
- Inspect fuel hoses (4).
- Rotate tires and adjust air pressure.
- Change front shock oil (1).
- Grease front wheel bearings (1).

Service and Maintenance – cont'd

110,000 miles (7,325 hours)

- Change engine oil and replace oil filter (4),
- Change front shock oil (1).
- Grease front wheel bearings (1).

115,000 miles (7,650 hours)

- Change engine oil and replace oil filter (4).
- Rotate tires and adjust air pressure.
- Change front shock oil (1).
- Grease front wheel bearings (1).

120,000 miles (8,000 hours)

- Change engine oil and replace oil filter (4).
- Replace spark plugs (4).
- Inspect alternator and A/C compressor belts (4).
- Replace air cleaner element (4).
- Inspect ignition timing (1) (4).
- Check idle speed (3) (4).
- Change engine coolant every 30,000 miles (2,000 hours) or 12 months (4).
- Inspect engine cooling system, hoses, clamps, and check coolant strength every 30,000 miles (2,000 hours) (4).
- Replace fuel filter (3) (4).
- Inspect fuel lines and hoses (2) (4).
- Inspect fuel hoses and tubes for emissions (1) (4).
- Inspect exhaust heat shield.
- Inspect rear wheel driveshaft joint boots.
- Inspect front and rear brakes.
- Inspect brake lines, hoses and connections.
- Inspect bolts and nuts on chassis and body.
- Inspect front fork assembly.
- Inspect steering operation and linkage.
- Repack front and rear wheel bearings.
- Replace timing chain/belt. (3) (4).
- Change automatic transmission fluid.
- Change front shock oil (1).
- Grease front wheel bearings (1).

FOOTNOTES:

1. This item is not required to be performed, however Westward Industries recommends that you perform maintenance on this item in order to achieve best vehicle operation.
2. This item is required for all states.
3. Required for all states except California.
4. These items are for emissions control.

SPECIFICATIONS

Engine Compression Ratio: 9.7:1

No. of Cylinder and Arrangement: 4-cylinder inline.

Firing Order: 1-3-4-2

Bore and Stroke: 2.6 x 2.87 in. (66 x 73mm)

Idle Speed: 900 +/- 100 RPM with transmission in PARK.

Ignition Timing: At idle 5 degrees (+/- 2 degrees) BDTC. Adjust alignment mark at crankshaft pulley to timing indicator at idle.

Oil Capacity: 2.8 US qts (2.96 liters) w/filter.
2.64 US qts (2.5 liters) w/o filter

Engine Oil Type: SAE 5W30 SG

Spark Plug Type: NGK BKR5ES-11 or Champion RC9YC4, RC10YC4

Spark Plug Gap: .039-.043 in (1.0-1.1mm)

Cooling System

Capacity: 6.34 US qts (6.0L)

Pressure – radiator: 15 psi

Coolant Mixture: 50/50 provides -40 F (-40 C) is recommended.

Transaxle: 4 speeds forward, one reverse. It combines an automatic transmission and differential into one component.

Fluid Capacity: 4.23 US qts (4 liters)

Brakes: Disc (one at front and two at rear).

Fuel Tank Capacity: 9.0 US gal. (34 liters)

WARRANTY SERVICE

To make a claim under warranty, contact the authorized GO-4 dealer or agent within 30 days upon realizing a problem with your vehicle. We recommend having all warranty work done by the Go-4 dealer or agent that sold you the vehicle. If not available, any authorized GO-4 agent or dealer. Remember your GO-4 vehicle must be delivered to an authorized GO-4 dealer or agent within the warranty period, all warranty work must be done by an authorized GO-4 dealer or agent. A proof of purchase will be needed by the dealer or agent to follow up any warranty claim.

Items Not Covered By Warranty

1. Vehicles subject to misuse, neglect, negligence or accident.
2. Vehicles that have been modified or altered so as to adversely affect their operation, performance, or durability or to change their intended use. Normal service work and above the repair and replacement of defective parts.
3. Normal service requirements arising during the warranty period such as fuel injection or ignition adjustment and wear of brake shoes.
4. Any expense when your vehicle has warranty done on it such as towing charges to and from your GO-4 dealer or agent.
5. Normal cleaning, adjusting or replacing if items such as filters, spark plugs and fuses.
6. Vehicles that were not maintained or operated as listed in the GO-4 operator's manual.
7. Periodic checking of fluid levels or adding of lubricants.
8. Check-up service, tune-up or diagnosis.

Owners' Obligation and Responsibilities

Normal maintenance and replacement of service items are the responsibility of the owner and as such are not considered defects in material and workmanship within the terms of the warranty. The need for service maintenance will depend on the user of the vehicle. See your GO-4 dealer or agent for proper maintenance and care of your vehicle. Proper maintenance and care will keep your operating cost to a minimum. To assure a warranty claim, it is the owner's responsibility to maintain all components in proper adjustment and to service the vehicle as per GO-4 operator's manual, which includes ensuring proper lubrication of all components and only the right fuel, along with the correct battery level and the correct air pressure in the tires.

FOR OWNERS/OPERATORS ONLY

To comply with National Traffic and Motor Vehicle Safety Act of 1966, Williams Steiger Equipment Safety and Health Act of 1970 and the Consumer Product Safety Act changes in address and/or ownership are to be reported to the manufacturer.

If the name of the owner of the vehicle or the owner's address changes, see your GO-4 dealer who had vehicle registration change forms. These should be filled out and:

1. Returned to the manufacturer.
2. Keep one copy for dealer records.

To find your local GO-4 dealer, inquire to:

Westward Industries Ltd.
2401 Saskatchewan Avenue, West
P.O Box 1288,
Portage la Prairie, Manitoba
Canada, R1N 3L5

Telephone: 1-204-857-8109
Fax: 1-204-239-5061

U.S. Distributors

Personal Information

Name _____

Address _____

Telephone _____

Fax _____

Local GO-4 Dealer

Name _____

Address _____

Service Manager _____

Telephone _____

Fax _____

GO-4 Information

VIN # _____

Engine # _____

INDEX

A	
Air Cleaner Element	32
Automatic Transmission Fluid	41
Auxiliary Switches	18
B	
Belts	44
Alternator belt, w/o a/c	44
With a/c	47
A/C compressor belt	45
Deflection, alternator	44
Deflection, a/c belt	45
Drive belt removal/install	46
Block Heater	28
Brake Fluid	40
Adding fluid	41
Brake Pedal	11
C	
Controls and Gauges	7
Cooling System	37
Adding coolant	38
D	
Decal	
Emission Control Decal	3
Tire Gauge	29
Defrost/ Vent	16
Dimmer Switch	17
Dome Light	18
Doors	11
E	
Engine Block Heater	28
Engine Number	3
Engine Oil	33
Adding oil	33
Capacity	36
Change Intervals	35
Check oil level	33
Filter	36
Viscosity	34
Engine Starting	22-25
Cold Engine	22
Crank but does not start	25
Jump Starting	48
Warm Engine	24
Engine Service	31
Exhaust Fumes	26

F	
Fan Speed	15
Filler Cap	27
Flash to Pass	17
Foot Throttle	11
Fuel Filter	42
Installation	42
Removal	42
Fuel Gauge	12
Fuel Type	27
Fuses	56
G	
General Information	2
Gear Selector	9
H	
Hazard Warning Switch	17
Heater Controls	15
Heater Valve Shutoff	16
Hourmeter	12
I	
Ignition Switch	8
J	
Jump Starting	48
L	
Lights	17
Light Switch/Turn Signal	16
M	
Maintenance Schedule	58
Maintenance Checks	58
Normal Maintenance Schedule	67
Severe Maintenance Schedule	60
O	
Operation	20
P	
Parking Brake	9
R	
Refueling	27
Running out of gas	28

S	
Safety	4
Operating Precautions for the Catalytic Converter	6
Seat	19
Service and Maintenance	31
Specifications	73
Starting a Cold Engine	22
Starting a Warm Engine	24
Starting the Vehicle	22
Stopping and Leaving Vehicle	21
T	
Tilt Adjustment	17
Tires	51
Changing a tire	53
Front	54
Rear	55
Inflation	51
Rotation	52
Towing	30
Transaxle	41
Automatic transmission fluid	41
Capacity	41
Checking fluid level	41
V	
Vehicle Appearances	57
Vehicle Emission Control Information	3
Vehicle Identification Number	2
W	
Warning Lights	13
Brake System	13
Coolant Temperature	15
Governor	13
High Beam	14
Oil Pressure	15
Panel Light	15
Service	15
Turn Signal	14
Warranty Service	74
Wiper Control	18

