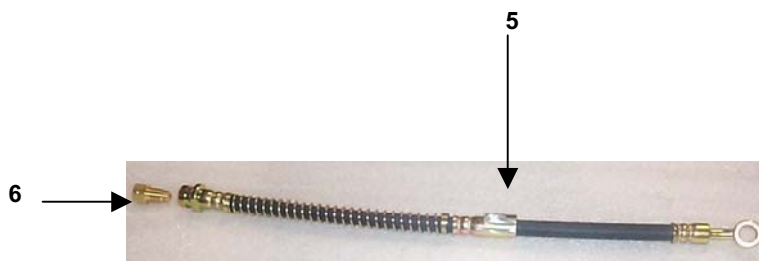
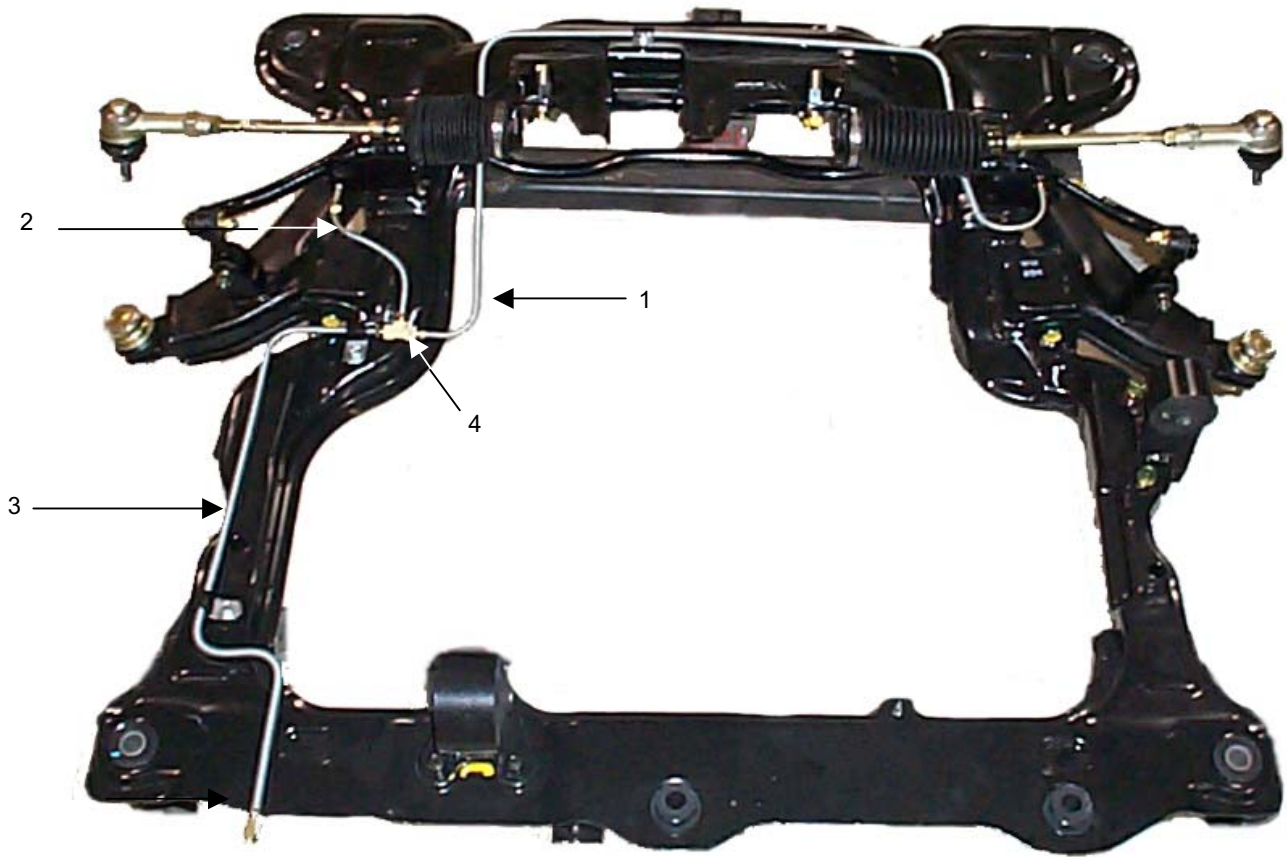
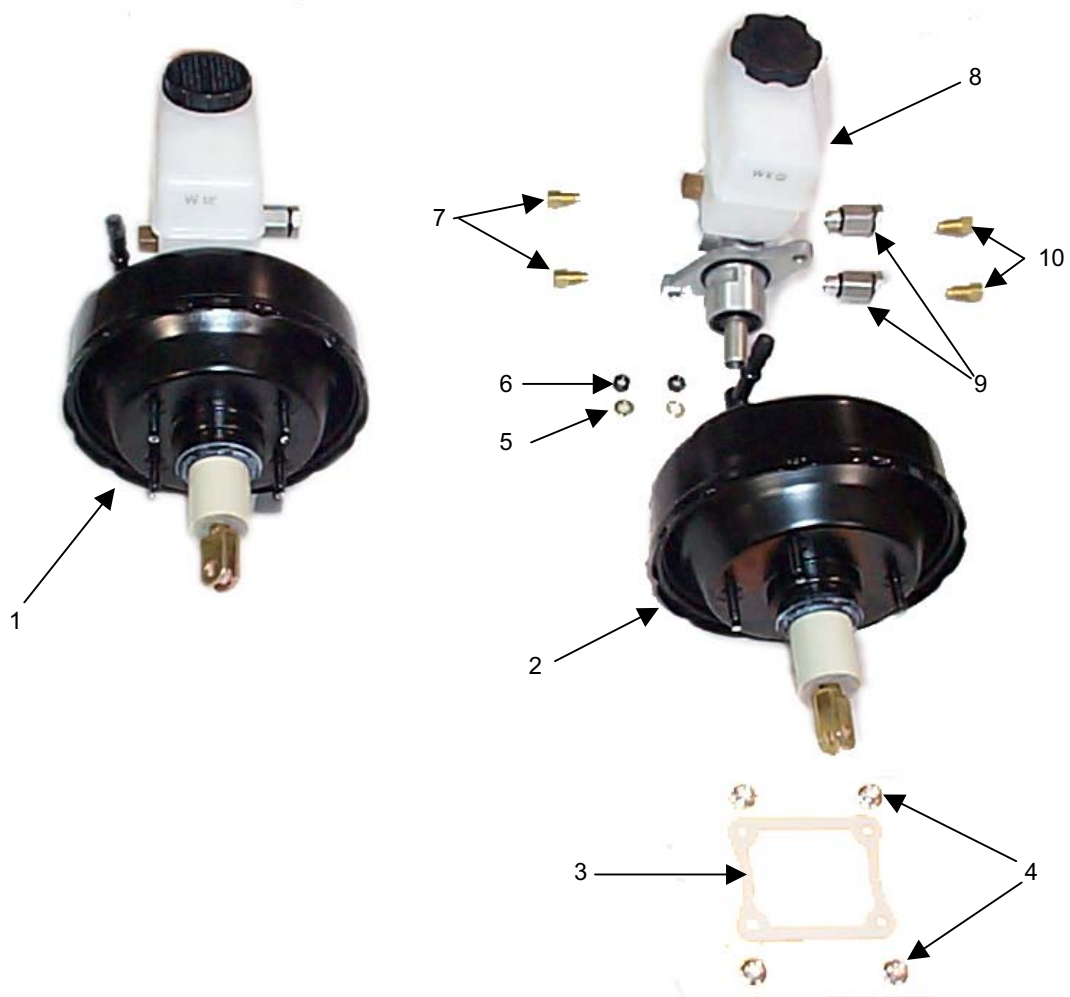


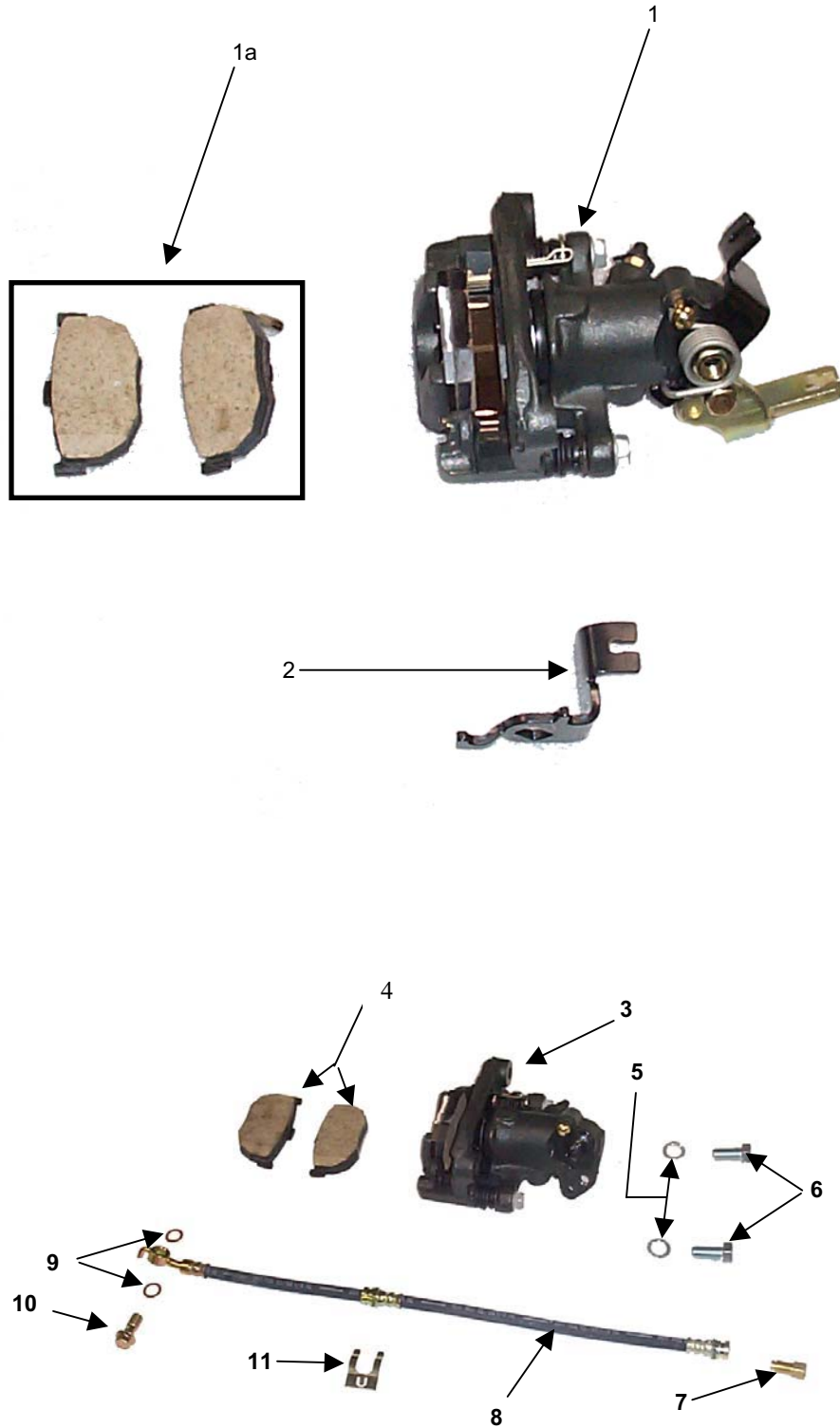
| <i>REF.</i> | <i>PART NAME</i> | <i>PART NO.</i> | <i>QTY.</i> |
|-------------|--------------------------------------|-----------------|-------------|
| 1 | Mount, Brake Arm | 1-58-310 | 1 |
| 2 | Brake Arm | 1-58-300 | 1 |
| 3 | Brake Pedal Pad | 434010 | 1 |
| 4 | Brake Clip | 43779-37010 | 1 |
| 5 | Brake Pin | 58581-11000 | 1 |
| 6 | Plastic Insert (not shown) | 771912 | 2 |
| 7 | Brake Switch | 93810-22100 | 1 |
| 8 | Jam Nut | 774212 | 1 |
| 9 | Nylon Lock Nut | 773787 | 1 |
| 10 | Carriage Bolt | 770079 | 2 |
| 11 | Nylon Lock Nut | 773801 | 2 |
| 12 | Hex Head Bolt | 773808 | 1 |
| 13 | Emergency Brake Handle | 1-58-320 | 1 |
| 14 | Hex Head Bolt | 77018 | 4 |
| 15 | Mount, Emergency Brake Cable | 1-58-214 | 1 |
| 16 | Emergency Brake Cable LH | 59760-02020 | 1 |
| | Emergency Brake Cable RH (not shown) | 59970-02020 | 1 |
| | Clip, E- Brake Cable (not shown) | 774215 | 1 |
| 17 | Flat Lock Nut | 770819 | 6 |



| <i>REF.</i> | <i>PART NAME</i> | <i>PART NO.</i> | <i>QTY.</i> |
|-------------|------------------------------------|-----------------|-------------|
| 1 | 40" Rear Brake Line | 1-58-004 | 1 |
| 2 | 7" Rear Brake Line "S" | 1-58-002 | 1 |
| 3 | 25 1/2" Rear Brake Line | 1-58-005 | 1 |
| 4 | Int. II Brake Line "T" Connector | 1-58-226 | 1 |
| 5 | Brake Hose | 58731-02010 | 2 |
| 6 | Int. II Brake Line Fitting | 1-58-224 | 2 |
| | 61" Main Brake Line (not shown) | 1-58-006 | 1 |
| | 36" Front Brake Line (not shown) | 1-58-007 | 1 |
| | Tab Rear Brake Line LH (not shown) | 1-58-212 | 1 |
| | Tab Rear Brake Line RH (not shown) | 1-58-213 | 1 |



| <i>REF.</i> | <i>PART NAME</i> | <i>PART NO.</i> | <i>QTY.</i> |
|-------------|---------------------|-----------------|-------------|
| 1 | Brake Booster Assy. | 1-58-001 | 1 |
| 2 | Booster | 59110-02000 | 1 |
| 3 | Seal | 59145-02000 | 1 |
| 4 | Flange Nut | 770909 | 4 |
| 5 | Lock Washer | 13602-08001 | 2 |
| 6 | Nut | 13100-08001 | 2 |
| 7 | Brass Adapter | 1-58-224 | 2 |
| 8 | Master Cylinder | 58510-02000 | 1 |
| 9 | Proportioning Valve | 58775-02100 | 2 |
| 10 | Adapter | 1-58-227 | 2 |



| <i>REF.</i> | <i>PART NAME</i> | <i>PART NO.</i> | <i>QTY.</i> |
|-------------|---|-----------------|-------------|
| 1 | Mando Brake Assembly RH | 58210-29330 | 1 |
| | Mando Brake Assembly LH (not shown) | 58230-29330 | 1 |
| 1a | Pad Kit, RR (RH/LH) | 58302-29A10 | 1 |
| 2 | Pivot, E-Brake Cable, LH | 1-58-203 | 1 |
| | Pivot, E-Brake Cable, RH (not shown) | 1-58-204 | 1 |
| 3 | Front Caliper | 58181-02A00 | 1 |
| 4 | Pad Kit, Front Caliper | 58101-02A00 | 1 |
| 5 | M12 Lock washers ZP | 774204 | 4 |
| 6 | M12 X 1.25 X 25mm GR 8.8 | 774226 | 4 |
| 7 | Adapter | 1-58-227 | 2 |
| 8 | Flexible Brake Hose | 430938 | 2 |
| 9 | Copper Washer | 17512-10000 | 4 |
| 10 | Connector Bolt | 58726-21300 | 2 |
| 11 | Clip, Brake Hose | 439936 | 2 |
| | Kit, Rear Brake Anti-Vibration (not shown) | 1-54-052 | 1 |